

New Entrant Booklet 2019

Sonrise Christian School

Thank you for considering Sonrise Christian School for your child. At Sonrise we offer a Christ centred education, a roll of 89 students and four classrooms.

This booklet is designed to give you some basic information about what we offer and the new entrant programme in our school.



Natalie Potini

New Entrant Teacher

I am a lover of Christ and mother to two gorgeous boys. I am the junior teacher at Sonrise Christian School and have been blessed to work here for 13 years. I strive to give children the best start to their schooling and have a gentle caring nature. I am passionate about my work and highly motivated to contribute my best to God, Sonrise and your child.

Mission statement

To provide Christ-centred education to prepare children for life both temporal and eternal i.e. 'EDUCATING FOR ETERNITY'

Kia whai oranga mo nga tamariki i raro i te maru o te Karaiti mo ake tonu atu

Vision statement

To be a thriving community, committed to Jesus Christ, committed to excellence in education and committed to service to others.

Our Values

L. I. F. E.

Love: God and your neighbour, development of a Christian character; caring community.

Integrity: Respect, honour, commitment, let us be judged by our deeds etc.

Faithfulness: to God, parents, teachers, our school, friends, perseverance, life-long learners.

Excellence: to strive for excellence in everything that we do.

Curriculum

All students access the essential learning areas of the New Zealand curriculum at their level and pace and receive instruction in: English, Mathematics and Statistics, The Arts, Health and Physical Education, Social Sciences, Technology, Science, and Learning Languages.

The Key Competencies: thinking, using language, symbols and texts, managing self, relating to others, and participating and contributing are woven into the teaching

of all learning areas. We encourage positive behaviour and provide positive reinforcement in the classroom.



Sonrise Christian School Uniform Price List

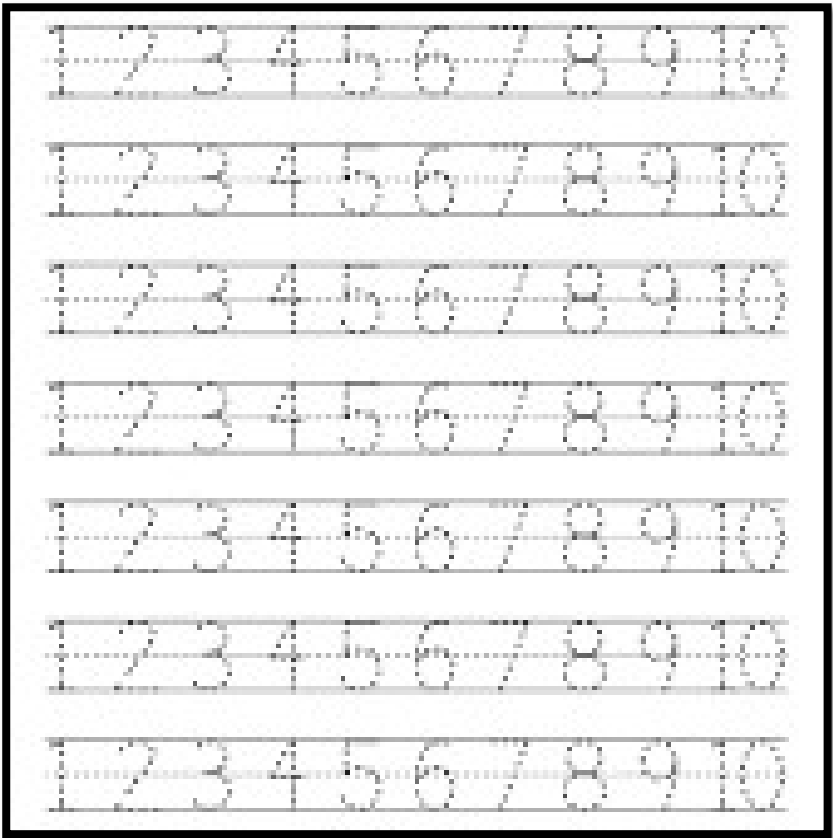
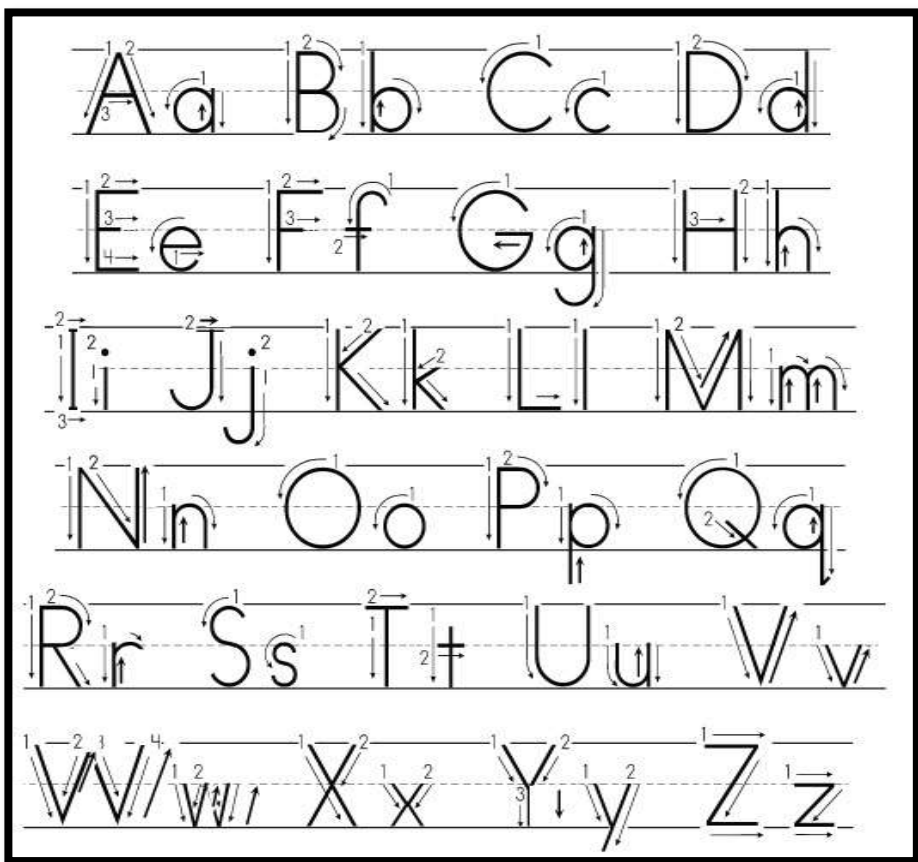
Item	Price	Primary Year 1-6	Intermediate Year 7-8	Secondary Year 9-10
Kids				
Navy/Gold kids polo shirt	\$40.00	√		
Navy/Gold kids hoodie	\$52.70	√		
Navy/White kids polo shirt				
Navy/White kids hoodie				
Navy kids soft shell jacket	\$70.75	√		
CCC kids track pants	\$63.80	√		
CCC kids tactic shorts	\$32.25	v		
Adults				
Navy/Gold adults polo shirt	\$43.40	v		
Navy/Gold adults hoodie	\$55.00	v		
Navy/White adults polo shirt	\$43.40			
Navy/White adults hoodie	\$55.00			
Navy adults soft shell jacket	\$89.15	v		
CCC adults track pants	\$79.80	v		
CCC adults stadium shorts	\$33.40	v		

Ready for school

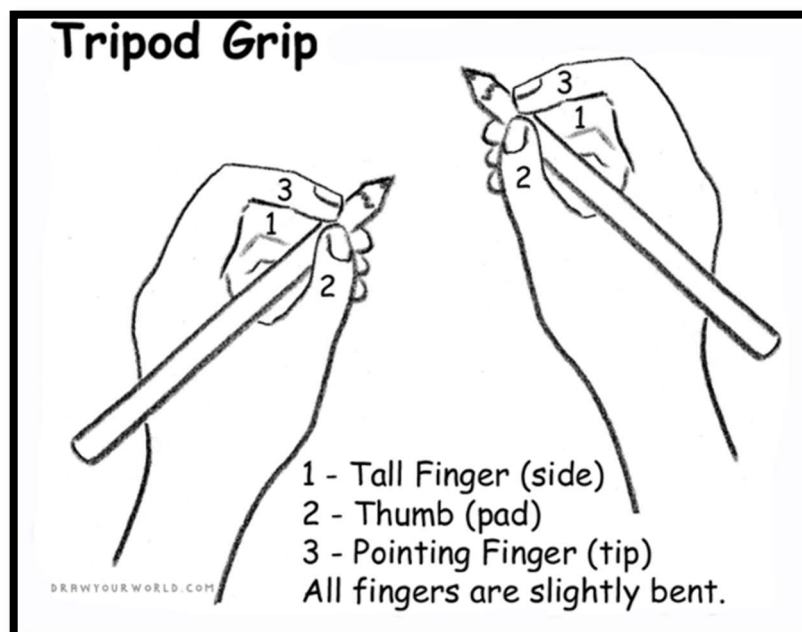
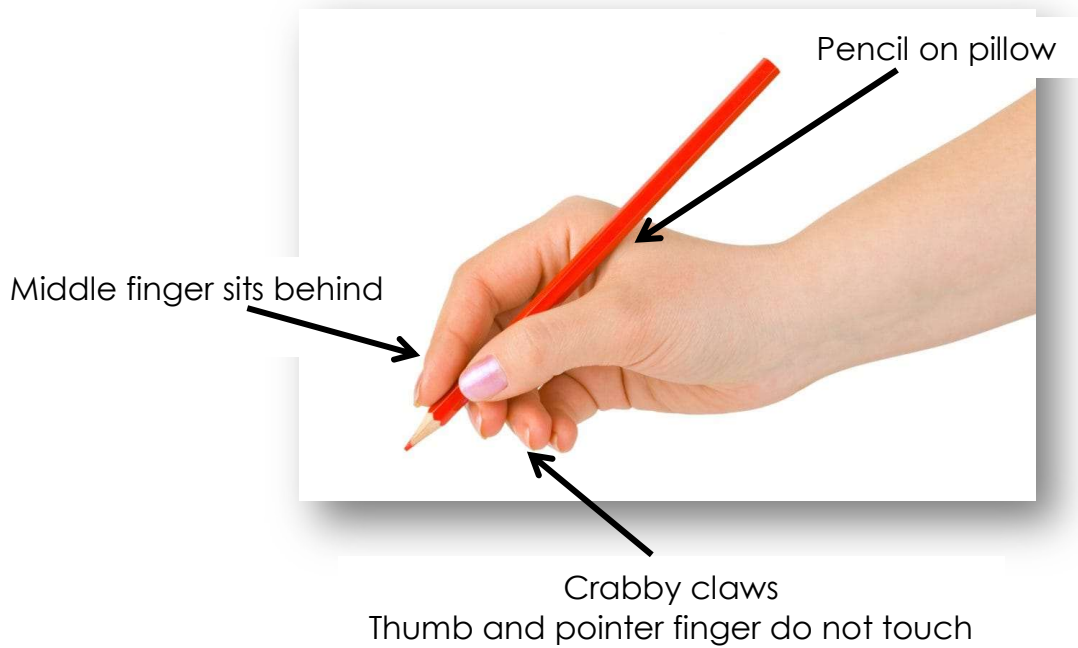
Step-by-step guide to enrolling your child:

		Things to bring:
1. Enrolment	<p>When your child turns 4 please pre-enrol so we know you're coming. <u>Complete an enrolment form online.</u> If you have any problems with access please phone or pop in to the school and collect an enrolment form. http://www.sonrise.school.nz/page/ Click – enrolment, then application form.</p> <p>We are required to check birth certificates and immunisation records of New Entrant children. These items must be sighted by Paku in the office prior to your child's first day at school. You are also welcome to meet with the Principal and teacher and have a tour around the school. This is a chance to ask any questions you may have and look through the classrooms.</p>	<ul style="list-style-type: none"> ▪ Birth certificate. ▪ Immunisation records.
2. Pre-visits	<p>In the 4 weeks prior to your child turning 5, they will be invited to join the New Entrant class for visits on Tuesdays and Thursdays from 8:45am-12:00noon.</p>	<ul style="list-style-type: none"> ▪ School bag. ▪ Piece of fruit for mat time. ▪ Snack for morning tea. ▪ Hat (Term 1 and Term 4).
3. The first day of school	<p>Bring your child to the classroom before school. Stay until your child is settled – try not to prolong the "goodbye" – upsets are rare and don't last long – please feel free to ring if you are concerned as to how your child is settling.</p>	<ul style="list-style-type: none"> ▪ Hat (Term 1 and Term 4) ▪ Play lunch, lunch and a water bottle. ▪ A bag and a change of clothing if you think it is necessary. ▪ <u>Please ensure all clothing is named.</u>

Letter and Number Formation



Correct Pen Grip



School Orientation



Assembly

Every Wednesday morning at 9:00am we have a whole school assembly. Parents, caregivers and the community are welcome to attend our school assemblies. Certificates are handed out at Wednesday assembly.



Supervision

Duty teachers supervise the children during playtimes and lunchtimes. Explain to your child that they can approach the duty teachers if they have any problems.



Lost property

Lost property is situated in the foyer outside Room 1.



Parent help

We welcome your assistance in the class or with tasks like making resources etc. Please see Natalie Potini if interested.



Homework

This comes home in the school bag. There will always be a reader, high frequency words and sometimes instructions or a personal message.



Reporting to Parents

- Portfolios with a sample of your child's work across all learning areas goes home to share.
- Written reports: Your child will receive a mid year report in June and November.



New entrant testing

After 5 weeks at school your child will be tested to gather data on the knowledge they enter school with. They will then be tested again after 12 months at school at the time of their 6th birthday. This information will be shared with you.



Concerns

You are welcome to share any concerns with the teachers. Please make an appointment for any discussions you wish to have, with either the classroom Teacher and/or Principal.



Website

Check us out at www.sonrise.school.nz







Facebook

Join us on facebook at <https://www.facebook.com/SonriseSchoolGisborne/>

Preparing for School

Here are some skills you can work on at home to prepare your child for starting school:

	What this may look like:
Encouraging independence:	<p>Developing independence is an important goal of the first year at school. You can help by:</p> <ul style="list-style-type: none"> ▪ Allowing your child to be responsible for their bag and belongings, putting their book bag away and giving them the time to do all they can for themselves. ▪ Getting dressed in the morning and ready for swimming by themselves.
Recognising their name:	<ul style="list-style-type: none"> ▪ Recognising their name. ▪ Writing their name is helpful. ▪ Practice writing their name with a capital letter at the beginning then lower.
Pencil grip:	<ul style="list-style-type: none"> ▪ Colouring in.
Writing: 	<ul style="list-style-type: none"> ▪ Talk about the sound different letters make. ▪ Play word games like 'I spy'. ▪ Have magnetic letters on the fridge. ▪ Encourage writing or drawing for pencil control and grip.
Reading: 	<ul style="list-style-type: none"> ▪ Listening to and telling stories. ▪ Recognising some letters of the alphabet and their phonetic sounds. ▪ Reading books daily to your child. ▪ Talk about pictures in books. ▪ Point out words on signs. ▪ There are a range of educational apps for letter formation, read along stories, early developmental skills e.g. puzzles and memory games.
Oral language:	<ul style="list-style-type: none"> ▪ Vocalising their needs e.g. 'I need to go to the toilet'. ▪ Encourage your child to speak in full sentences when having a conversation (some things may need modelling). ▪ Talk to your child about what they have been learning or about the activity they are engaged in.
Mathematics: 	<ul style="list-style-type: none"> ▪ Basic counting to 10. ▪ Number identification to 10. ▪ Finding numbers around the house and neighbourhood. ▪ Talking about time, colour and shapes. ▪ Playing board games to practical recognising dots on a die.
Other helpful skills: 	<ul style="list-style-type: none"> ▪ Handling scissors. ▪ Bouncing and catching a ball. ▪ Puzzles. ▪ Imaginative play.

General Information

School starting and finishing time

School starts: 8:45am
Morning tea: 10:15am-10:35am
Lunch: 12:15pm-1:00pm
School finishes: 2:30pm

Lunch Orders

Thursday

Absences

To be reported to Paku at the office by 9:10am.

Medical information

Please make the classroom teacher and office aware if your child has any medical conditions they should know about. Any medications required must be handed into the office at the beginning of the day with clear instructions. Medications such as asthma inhalers and epi-pens need to be provided to the school and will be kept in a locked cupboard. All teaching staff are FIRST AID trained.

Clothing

Uniforms are compulsory. We have a range of school clothing available for purchase from the school office. Please refer to the clothing price list and sizes for further details.

It is compulsory for children to wear a wide brim sun hat in Term's 1 and 4.

School fundraising group

We are always looking for enthusiastic parents who want to be involved with fundraising to join our Parent Support Group. Please speak to Paku at the office if you are interested.

Reporting to parents

Learning journals (end of every term). Formal reports (Term 2 and Term 4).

After school Care

House of Breakthrough After School Care
Cnr Ormond & Lytton Road
Hours: 2:30pm-5:30pm
T: 06 8689374, M: 0276348964

YMCA Oscar After School Care
Monday-Friday 2:30pm-5:45pm
T: 06 8679259

Contact Details

Natalie Potini
(Year 0-2 Teacher)

E: natalie@sonrise.school.nz

Wendy Gabriel
Principal

E: sonrise.wg@xtra.co.nz

Paku Kingi
Sonrise Christian School Office

E: info@sonrise.school.nz

T: 06 8689841